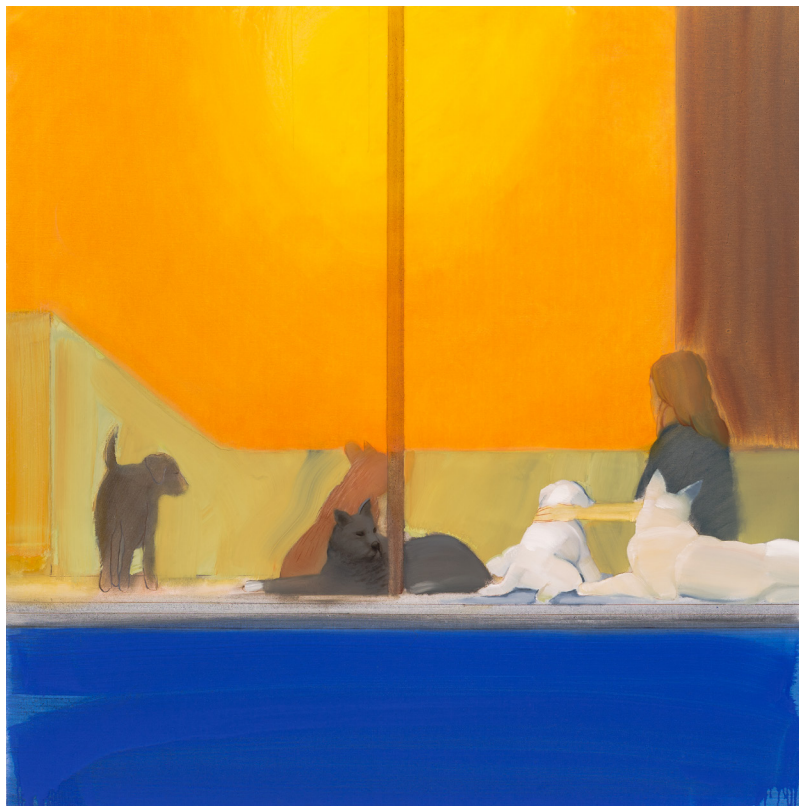


FOR IMMEDIATE RELEASE

Contact: Locks Gallery  
T 215-629-1000/F 215-629-3868  
info@locksgallery.com

## Elizabeth Osborne *Reflections: Painting Memory*

September 8 - October 12, 2017  
Artist reception: Friday, September 8, 5:30–7:30 pm



*Doggie Daycare*  
2016-2017  
oil on canvas  
53 3/4 x 53 3/4 inches

Locks Gallery is pleased to debut a new group of paintings by renowned Philadelphia painter Elizabeth Osborne. *Reflections: Painting Memory* is emblematic of the artist's prolific fifty-year career; Osborne's signature style presents itself in scenes of daily life - views from her Brandywine St. studio, figures of friends, family, and mentors, and still lives of her home. The gallery will host a reception with the artist on Friday, September 8, from 5:30-7:30pm.

[continued on reverse]

600 Washington Square South  
Philadelphia PA 19106  
tel 215.629.1000 fax 215.629.3868  
info@locksgallery.com  
www.locksgallery.com

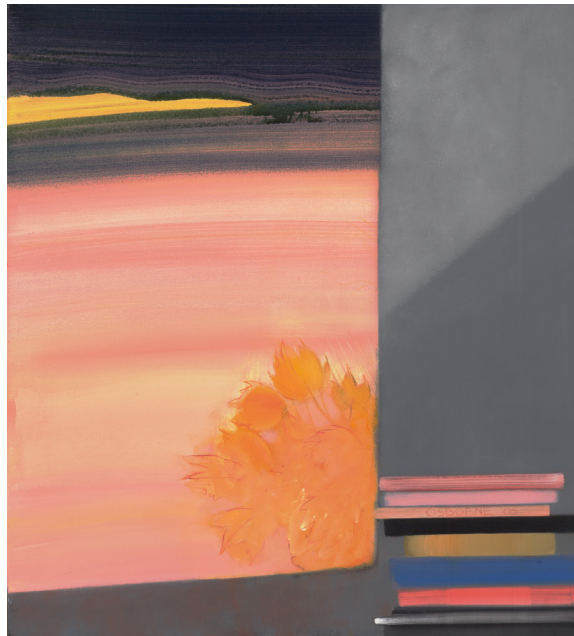
LOCKSGALLERY





A fully illustrated catalog with an essay titled *Elizabeth Osborne: Art as Experience* by author and curator Judith Stein will accompany the exhibition. From numerous interviews and studio visits with the artist, Stein chronicles the artist's life, connecting a personal narrative with subjects and themes that have run throughout her entire oeuvre.

In these large-scale luminous paintings, Osborne returns to her treatment of the figure reminiscent of her early 1960s canvases while incorporating the large, stained expanses of color like those in her 1970s floating landscapes with the opaque, gestural brush strokes referenced from her more recent abstractions. Osborne emanates light with vibrant planes of color, embracing visible brushwork in large sweeping layers. These bold works highlight Osborne's mastery of her medium and the culmination of her characteristic mix of representation with abstraction. An artist who has long followed her instincts and acute visual sensibilities, Osborne chooses to focus on her own artistic vision and interests, often operating outside of the changing styles and trends. *Reflections: Painting Memory* is an embodiment of Osborne's steadfast dedication to her art.



*Curtis House Library*, 2012, oil on canvas, 38 x 34 inches

---

Elizabeth Osborne has exhibited extensively throughout the United States for over fifty years. Her work is included in the collections of the Philadelphia Museum of Art, Philadelphia, PA; the Minneapolis Institute of Art, Minneapolis, MN; the Delaware Art Museum, Wilmington, DE; the Pennsylvania Academy of the Fine Arts, Philadelphia, PA; the James A. Michener Museum of Art, Doylestown, PA; and the Woodmere Art Museum, Philadelphia, PA. Elizabeth Osborne taught at the Pennsylvania Academy of the Fine Art from 1963 to 2015. Locks Gallery has represented the artist since 1972.

---

Locks Gallery is located at 600 Washington Square South in Philadelphia, PA. Gallery hours are Tuesday through Saturday, 10 am to 6 pm. For additional information, please contact Locks Gallery at 215.629.1000, 215.629.3868 fax, or [info@locksgallery.com](mailto:info@locksgallery.com).